



**SITE AND RESOURCE
GUIDE
NORTHEASTERN NEVADA**





ELKO DAILY FREE PRESS

www.elkodaily.com

**In print &
Online**

**Elko's #1
Source**

*for News, Sports &
Advertising Information*

Over 20,000 readers daily - in print & online

- Marketing and advertising consultants
- Website design
- Social media management
- Commercial printing

Call us at 775-738-3118
advertising@ElkoDaily.com

www.ElkoDaily.com

NNRDA STAFF / CONTENTS



Pam Borda
Executive Director
pam@nnrda.com

Welcome to the Northeastern region of Nevada where opportunities are limited only by the time it takes to pursue them. Whether looking to locate a business here or seeking employment with a local company, the NNRDA is here to help. This resource guide provides you with information on the region, from our spectacular outdoor recreation to education, healthcare and business climate.

Northeastern Nevada is the center of operations for firms in Mining, Minerals and Manufacturing as well as Transportation, Logistics and Operations. As the largest producer of gold in the nation and fourth largest in the world, we are home to the largest gold mining companies in the world as well as most of the major mining support companies.

As Nevada's fastest growing area, we offer a great business climate with one of the most attractive tax structures in the nation, affordable housing and inexpensive land. Our local college provides extensive technical and professional training for your workforce needs.

Please visit our website for additional details (www.nnrda.com) and take a tour of the area via our online videos. NNRDA is here to help you and can provide a multitude of information and assistance with demographics, land and buildings, incentives, etc. Call us today 866.937.3556.

Warm regards,

Pam Borda
Executive Director



Kris Ashdown
Executive Assistant
kris@nnrda.com



Jan Morrison
Economic Development Officer
jan@nnrda.com

TABLE OF CONTENTS

NNRDA Overview	3
Elko County	7
Carlin	9
Elko	11
Wells	13
West Wendover	15
Eureka County	17
Humboldt County	19
Winnemucca	21
Lander County	23
White Pine County	25
Ely	27
Education	31
Recreation	35
Culture	40
Success Stories	43

Learn more: www.nnrda.com

Northeastern Nevada Regional Development Authority
1500 College Parkway • McMullen Hall, #103 • Elko, NV 89801
775.738.2100 • 1.866.937.3556 • 775.738.7978 (FAX)



NNRDA OVERVIEW

Northeastern Nevada Business Opportunities Abound

Why Northeastern Nevada

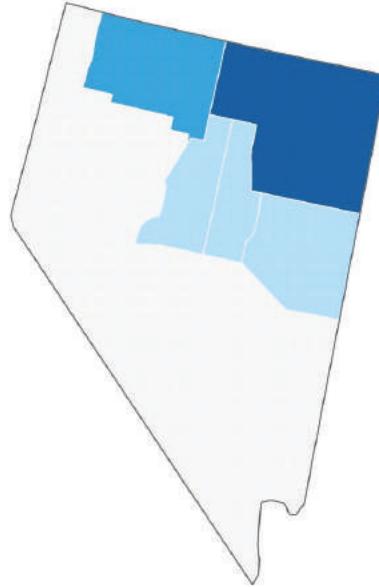
“In the end, the business basics are what really matter: **proximity to suppliers** and strong linkages, **proximity to customers**, and adequate supply of **skilled labor**, adoption of technological **innovation**, and well maintained and efficient **infrastructure**.”

Highlights

- Largest gold producing area in the United States
- 4th largest gold producing area in the world
- 50+ years of mining activity
- Over 500 mining support companies in the region
- One of lowest unemployment rates in the state and in the nation at 4.1%

Proximity to Major Markets

- Ideally situated between the pacific coast and intermountain west regions.
- Centrally located to major western cities including: San Francisco, Portland, Salt Lake City, Las Vegas, and Los Angeles.
- NNRDA includes Elko, Eureka, Humboldt, Lander and White Pine Counties.



Logistics & Distribution

- The logistics industry provides a complete transportation network, international logistics services, and support to key business sectors.
- More than 50 carriers serve Nevada, offering transcontinental, fast-freight and van-line shipping to major markets that are within one or two day truck transit range.

Quick Stats

- Population - 72,767
- 7.9% Growth for Last 5 Years – State Growth 7.0%
- Jobs – 36,015 (2016)
- Average Earnings - \$66,449 (2016)

Incentives

State Incentive Programs:

- Catalyst Fund-The \$10 million fund created by the 2011 Nevada Legislature aids with business relocation and expansion
- Sales & Use Tax Abatement – on eligible machinery and equipment; under abatement rate would be 2%
- Sales Tax Deferral – setting up interest free payment plan for taxes into equal monthly payments over a 60 month period
- Modified Business Tax (Payroll) Abatement – 50% for 4 years on new job
- Personal property tax abatement

City	Highway Miles
Denver, CO	758
Los Angeles, CA	649
Phoenix, AZ	725
Portland, OR	663
Sacramento, CA	418
Salt Lake City, UT	225
Cheyenne, WY	660
San Francisco, CA	504
Seattle, WA	735



Learn more: www.nnrda.com

Northeastern Nevada Regional Development Authority
1500 College Parkway • McMullen Hall, #103 • Elko, NV 89801
775.738.2100 • 1.866.937.3556 • 775.738.7978 (FAX)

NNRDA OVERVIEW continued

Training Program Incentives:

- Train Employees Now (TEN) – training administered and conducted in partnership with Nevada’s community colleges
- Silver State Works – administered by Nevada Department of Employment Training and Rehabilitation (DETR)
- Job Placement – Nevada Job Connect recruitment and employee search/job placement services available at no cost to employer

Workforce and Employment

Nevada is a Right to Work State

Right to Work Law secures the right of employees to decide for themselves whether or not to join or financially support a union.

- **Policy on Union Membership, Organization, etc.**
No person shall be denied the opportunity to obtain or retain employment because of non-membership in labor organization.
- **Prohibited Activity**
Agreements prohibiting employment because of non-membership in labor organization; strike or picketing to force or induce employer to make agreement; compelling person to join labor organization, strike, or leave employment; conspiracy to cause discharge or denial of employment or to induce refusal of work on basis of membership.

Great Basin College – CTE Courses

Great Basin College (GBC) offers career and technical education certificates, associates and bachelors degrees, in the following:

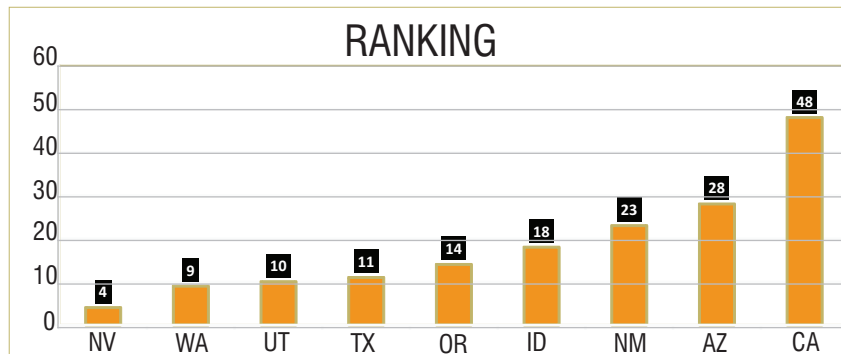
- Diesel Technology
- Electrical Systems
- Industrial Millwright
- Instrumentation
- Land Surveying/Geomatics
- Welding Technology

Computer Technology offerings include:

- Computer Programming
- Digital Information Technology
- Graphic Communications
- Networking
- Office Technology
- And more!

Corporate Advantages

Nevada’s Tax Structure is one of the least burdensome in the nation



QUICK FACTS

- Covers Elko, Eureka, Humboldt, Lander and White Pine Counties
- Gold mining region of Nevada and the U.S.



GOLD RUSH COUNTRY

The largest gold mining area
in North America

Home of the
Carlin Canyon



Feel what it's like to be
on the California Trail!

Carlin Annual Events:

Spook walk

Carlin Sho-N-Shine/
Art in the Park

Carlin Equestrian
Park Events 

Carlin Smokin' 
Hot Chili Cook-Off

Western Heritage Days

Easter Egg Hunt

Follow us on  Carlin Parks & Rec Board
for more Carlin event information!



For information, contact the City of Carlin
775-754-6354

151 S. 8th St. • Carlin, NV 89822

PO BOX 787 • Carlin

www.cityofcarlin.com

WENDOVER WILL

WELCOMING NEW BUSINESS TO
WEST WENDOVER FOR OVER 65 YEARS



"Wendover Will"®
Welcomes You To
WEST WENDOVER
NEVADA

Come Grow With Us

West Wendover can provide your company and your people a great opportunity to live, work and grow in a fun and vibrant community that welcomes all. This is a convenient and effective location for business. We have the support, land, water, resources and people along with a professional city staff to assist you in reaching your goals. West Wendover... "come grow with us."

West Wendover offers gaming, dining, golf, recreation, historic sites, top name entertainment at the Peppermill Concert Hall, the Bonneville Salt Flats and more! *Just 90 minutes west of Salt Lake City on I-80.*

866-299-2489 westwendovercity.com



Scan QR code for
more information



See us - search
West Wendover

RESORTS AT WENDOVER

RAINBOW
HOTEL & CASINO

Peppermill
HOTEL & CASINO

MONTGOMERY
CASINO & RESORT

wendoverfun.com 1-800-537-0207

WENDOVER
NUGGET
HOTEL & CASINO

wendoverresorts.com
1-800-848-7300

RED GARTER
HOTEL & CASINO

775-664-2111

TOANA
VISTA
GOLF CLUB

775-664-4300

ELKO COUNTY

Cities of Carlin, Elko, Wells, and West Wendover

Overview

Northeastern Nevada produces the most gold anywhere in the United States, and is even among the top producers in the world. Its primary business hub is Elko County, which has about 53,000 residents and covers 17,400 square miles.

We have great communities and lots of things people want to see as far as good schools, a community college, and a hospital facility that's top notch. All of these things make it good for a business and its employees to come to this area. For companies with large shipping needs, the Northeastern Nevada Regional Railport's Industrial Park offers choice land for new business.

The railport has a 57-acre, multi-modal transloading facility, which offers full-service transloading plus warehousing. With the railport, the Elko County Regional Airport and the proximity to the interstate as well as state highways, Elko County is the hub for a variety of modes of transportation.

- Located on Interstate 80
- Commercial Airport, two runways, hangars and hangar rentals, fuel (100 LL and Jet A), rental cars, shuttle service
- Available water rights
- No impact fees

Existing industries

- Mining
- Manufacturing
- Ranching
- Renewable Energy



Learn more: www.nnrda.com

Northeastern Nevada Regional Development Authority
1500 College Parkway • McMullen Hall, #103 • Elko, NV 89801
775.738.2100 • 1.866.937.3556 • 775.738.7978 (FAX)

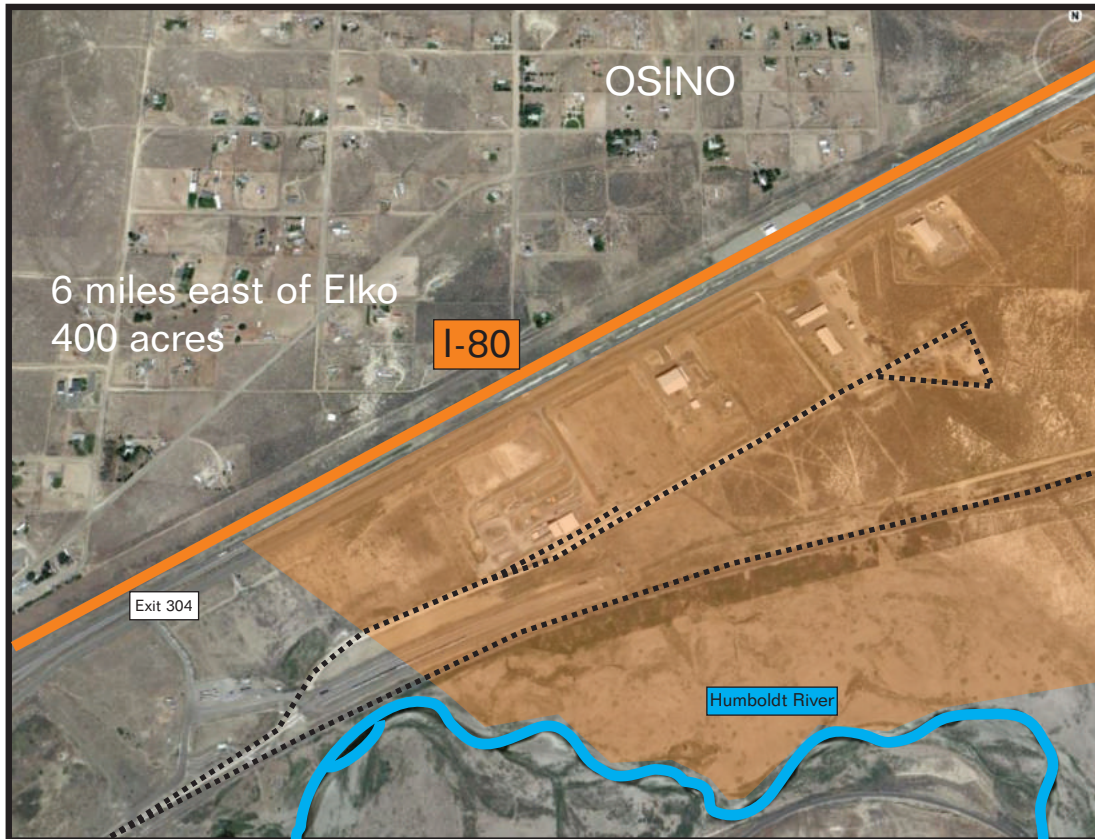
ELKO COUNTY

Cities of Carlin, Elko, Wells, and West Wendover



www.elkocountynv.net

Elko County Regional Railport and Industrial Park



QUICK FACTS

- Population: 53,000
- Elevation: 5,066
- 17,400 square miles or nearly 11,000,000 acres
- 72% Public Land
- 4th largest county in the continental US
- Established March 5, 1869
- University of Nevada established in the City of Elko in 1874



CARLIN

Elko County

Overview

Known for its top-producing gold mines and limitless recreational opportunities, Carlin is the perfect merger of business-friendly and family-friendly. Interested in building your transportation or manufacturing business? We have the infrastructure, access and workforce you need.

Northeastern Nevada is the 4th largest gold producing region in the world, and Carlin is the gateway to the world's largest gold mines.

Carlin also offers a wealth of available and affordable sites, and a business-friendly city government.

From rock hounding to hunting and from hiking to dirt biking, Carlin is just minutes from some of the best recreation in Nevada. Trace the trail of Carlin's first emigrants, explore rare geological formations in Carlin Canyon or picnic and fish at the Chinese Garden Nature Study.

- Located on Interstate 80
- City Owned Industrial Park
- Rail
- 20 miles west of Elko

Served by the following utilities:

- Wells Rural Electric
- Southwest Gas
- City of Carlin Municipal Utilities
- Elko Sanitation
- Frontier Communications

Existing industries

- Mining
- Ranching
- Transportation



Chinese Gardens



AMTRAK — City of Carlin



Learn more: www.nnrda.com

Northeastern Nevada Regional Development Authority
1500 College Parkway • McMullen Hall, #103 • Elko, NV 89801
775.738.2100 • 1.866.937.3556 • 775.738.7978 (FAX)

CARLIN

Elko County



www.cityofcarlin.com



Carlin Industrial Park



- Owned by the City of Carlin
- Utilities within the park
- City water and sewer
- Served by Wells Rural Electric
- Parcel size is flexible
- Price is negotiable depending on job creation, etc.
- Gateway to the mines.
- 100 acres

Property is located between I-80 and the primary street in downtown Carlin and between two exits off I-80 to Carlin.

QUICK FACTS

- Population: 3,000
- Elevation: 4,950
- Square miles: 9
- First settled in 1868
- Established December 4, 1886
- Gateway to the gold mines
- Named for Civil War general William Passmore Carlin



CITY OF ELKO

Elko County

Overview

The perfect merger of small town charm and business-friendly community, the City of Elko is not only the number one “best small town in America,” according to Norman Crampton’s book, but also the service hub of the Northeastern Nevada region.

The Northeastern Nevada Regional Railport: just six miles outside Elko, the Northeastern Nevada Regional Railport and Industrial Park offers rail service through Union Pacific and BNSF.

A business-friendly government: consider our pro-business right-to-work laws and a location in one of the lowest taxed states in the nation.

- Located on Interstate 80
- Commercial Airport, two runways, hangars and hangar rentals, fuel (100 LL and Jet A), rental cars, shuttle service

Served by the following utilities:

- Southwest Gas
- Elko Heat-Geothermal
- NV Energy
- City of Elko Municipal Utilities
- Elko Sanitation
- Frontier Communications

Existing industries

- Mining
- Manufacturing
- Ranching
- Renewable Energy



Elko Regional Airport



Local Hospital — Northeastern Nevada Hospital



Learn more: www.nnrda.com

Northeastern Nevada Regional Development Authority
1500 College Parkway • McMullen Hall, #103 • Elko, NV 89801
775.738.2100 • 1.866.937.3556 • 775.738.7978 (FAX)

CITY OF ELKO

Elko County



The Heart of Northeast Nevada

www.ci.elko.nv.us



Elko Industrial Land



QUICK FACTS

- Population: 22,000
- Elevation: 5,200
- Square miles: 17.6
- Incorporated in 1917
- Largest city in all directions for over 130 miles
- University of Nevada established in the City of Elko in 1874
- Celebrating 100th Year Anniversary 1917-2017



WELLS

Elko County

Overview

Build your business in a community that provides ideal traffic logistics and trucking services, and ample land with already installed infrastructure including roads, power, water and sewer. Looking forward to some of the lowest taxes in the nation? You've come to the right place.

Our 160 acre city-owned business park is adjacent to the municipal airport, at the intersection of US 93 and Interstate 80, and ready for your business. Already outfitted with three large truck stops, motels and restaurants, the park is perfectly positioned for multi modal transportation, manufacturing and shipping. Shipments are one day away from the Pacific Northwest and Intermountain areas.

- Located at crossroads of Interstate 80 and US 93
- Airport—Class B
- Member owned electrical cooperative
- Ample water and wastewater capacity
- Clean air and great scenery

Served by the following utilities

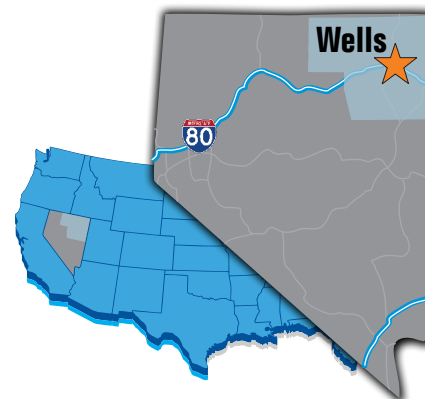
- Wells Rural Electric
- Wells Propane
- Wells Municipal Water and Sewer
- Frontier Communications

Existing industries

- Mining
- Ranching
- Agriculture
- Geothermal



Angel Lake



Learn more: www.nnrda.com

Northeastern Nevada Regional Development Authority
1500 College Parkway • McMullen Hall, #103 • Elko, NV 89801
775.738.2100 • 1.866.937.3556 • 775.738.7978 (FAX)

WELLS

Elko County



www.cityofwellsnv.com



Wells Industrial Land



- Conveniently located at I-80 and U.S. Highway 93, easy access to airport and Union Pacific Railroad.
- Near Newmont's Long Canyon Mine and Noble Energy's Oil and Gas sites.
- Flexible parcel sizes and utilities.
- Price negotiable depending on economic impact.

160 acres owned by the City of Wells.

QUICK FACTS

- Population: 1,500
- Elevation: 5,600
- Square miles:
- Incorporated in 1928
- Gateway to the Humboldts
- Wells Power Plant established in 1927 and is still owned by its customers.



WEST WENDOVER

Elko County

Overview

Nestled against the Nevada-Utah border, West Wendover is a thriving tourism destination—hosting as many as 30,000 visitors each week. Looking for stability, low taxes and easy access to the western United States? You've come to the right place.

A 35-acre industrial park at the crossroads of I-80 and US-93A and adjacent to the Union Pacific Railroad, West Wendover's city-owned industrial park project (phase 1) offers a variety of low cost parcels for warehousing, transportation and more.

A business-friendly community. Enjoy living in one of the lowest taxed states in the nation. Plus, you may be eligible for state incentives—like personal property tax abatement and workforce training programs.

- Located on Interstate 80, on the Utah/Nevada border
- City Owned Industrial Park
- Airport-non-commercial with charter airline, hangars and hangar rentals, pilot supplies, GPU/Power carts, Passenger terminal/lounge, TSA, fuel (100 LL and Jet A), and historic Wendover Airfield Museum
- 107 miles east of Elko

Served by the following utilities:

- Wells Rural Electric
- Wendover Gas Company
- City of West Wendover Municipal Utilities
- Frontier Communications
- CentraCom

Existing industries

- Mining
- Tourism
- Ranching
- Agriculture



Learn more: www.nnrda.com

Northeastern Nevada Regional Development Authority
1500 College Parkway • McMullen Hall, #103 • Elko, NV 89801
775.738.2100 • 1.866.937.3556 • 775.738.7978 (FAX)

WEST WENDOVER

Elko County



westwendovercity.com



West Wendover Industrial Park



City owned, 30+ acres plus another 2,000 acres undeveloped.

- All improvements include paved roads and utilities.
- Near I-80 exit, US Hwy 93 and the airport with railway adjacent.
- On the Nevada/Utah border with easy access to Salt Lake City without associated Utah taxes.
- 20 minutes to Newmont's Long Canyon Mine
- Price is negotiable depending on economic impact.

QUICK FACTS

- Population: 4,500
- Elevation: 4,462
- Square miles: 7.32
- Home to Historic Wendover Field: The largest military base, bombing/gunnery range in WWII including the famed 509th Composite Group of the Atomic Manhattan Project
- First Intercontinental telephone line connection
- Home to World Land Speed records
- Home to "Wendover Will," Largest mechanical neon Cowboy
- Incorporated: July 1, 1991



EUREKA COUNTY

Cities: Eureka, Beowawe, and Crescent Valley

Overview

If you like fresh high desert air, stunning mountain views and no traffic congestion, you'll love Eureka County.

Located in central Nevada, Eureka County is comprised of three towns - Eureka, Beowawe and Crescent Valley. Primarily a ranching, agricultural and mining county, Eureka County welcomes these and new industries with no existing zoning ordinances, very low property tax rates and no business licensing.

With a network of interstate highways and railroad lines, transportation to and from Eureka County is fast and dependable. At 6,500 feet, Eureka has the highest elevation of the three towns; both Beowawe and Crescent Valley are at an elevation of 4,000 feet.

Mild temperatures, along with the surrounding mountains and the Humboldt River, make Eureka County an outdoor playground. The outdoor enthusiast will never lack for activity. Hunting, fishing, hiking, swimming and much more are all readily available.

- Highways: Highway 50, Interstate 80, NV 306, NV 278
- No local county fees
- Dunphy Airport — Union Pacific Railroad on I-80
- Airport- fuel (100LL and Jet A). Six miles northwest of Eureka. Two runways, hangars and tiedowns.
- 114 miles southwest of Elko

Served by the following utilities:

- Mt. Wheeler Power
- NV Energy
- Wells Rural Electric
- Suburban Propane
- Eureka Town Water System
- Eureka County Public Works
- Crescent Valley: Crescent Valley Water Department

Existing industries

- Mining
- Ranching
- Agriculture



Learn more: www.nnrda.com

Northeastern Nevada Regional Development Authority
1500 College Parkway • McMullen Hall, #103 • Elko, NV 89801
775.738.2100 • 1.866.937.3556 • 775.738.7978 (FAX)

EUREKA COUNTY

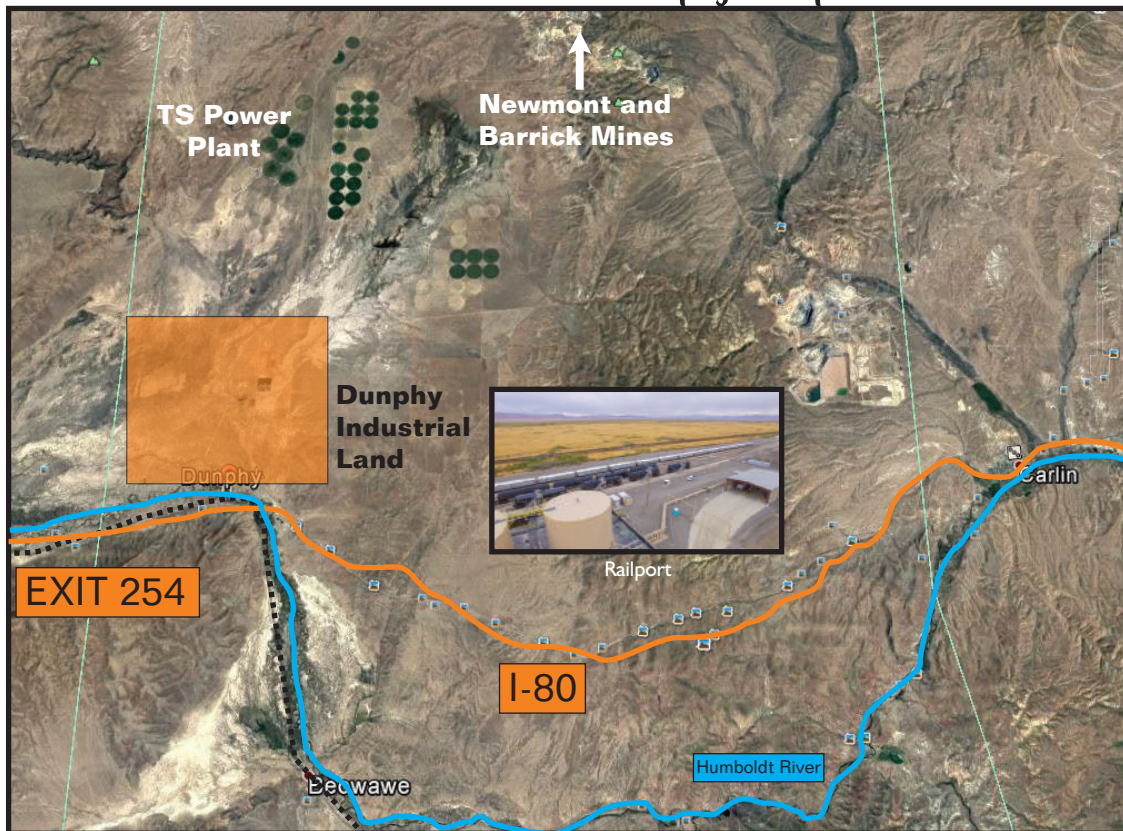
Cities: Eureka, Beowawe, and Crescent Valley

EUREKA COUNTY

www.co.eureka.nv.us



Industrial Land and Dunphy Railport



QUICK FACTS

- Population: 2,000
- Elevation: 6,500
- Square miles: 4,180
- Total Jobs: Nearly 5,000
- Established 1873
- 81% of the land is public
- Eureka was named for the Green term meaning "I have found it"



HUMBOLDT COUNTY

City of Winnemucca

Overview

Humboldt County is located in the rugged high desert region of north-central Nevada, bordered on the north by Oregon and by neighboring Nevada counties to the west, south and east. The County's 9,626 square miles offer some of the most varied, spectacular scenery in the State and a wide array of recreational opportunities.

The County is located in the rich gold mining center of the Western U.S. and is the leading agricultural county in the State of Nevada with over 100,000 acres under cultivation. Tourism is also a large part of the County's economic base due to the large numbers of visitors the gaming industry brings to the area and the draw of the beautiful wide open spaces, historical sites, and great hunting and fishing

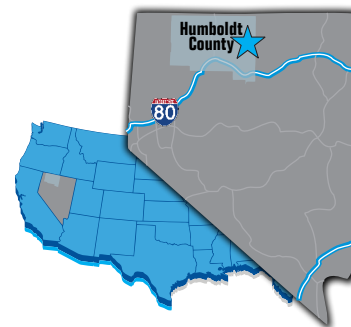
- Highways: Interstate 80, Hwy 95
- Non-commercial airport (100LL and JetA fuel). Five miles southwest of Winnemucca. Four runways, two helipads, hangars and tiedowns.
- Rail line with spurs, Union Pacific and BNSF

Served by the following utilities:

- NV Energy
- Harney Electric Cooperative, Inc.
- Southwest Gas
- City of Winnemucca Municipal Utilities

Existing industries

- Mining
- Ranching
- Agriculture and Agriculture Services
- Tourism and Construction



Learn more: www.nnrda.com

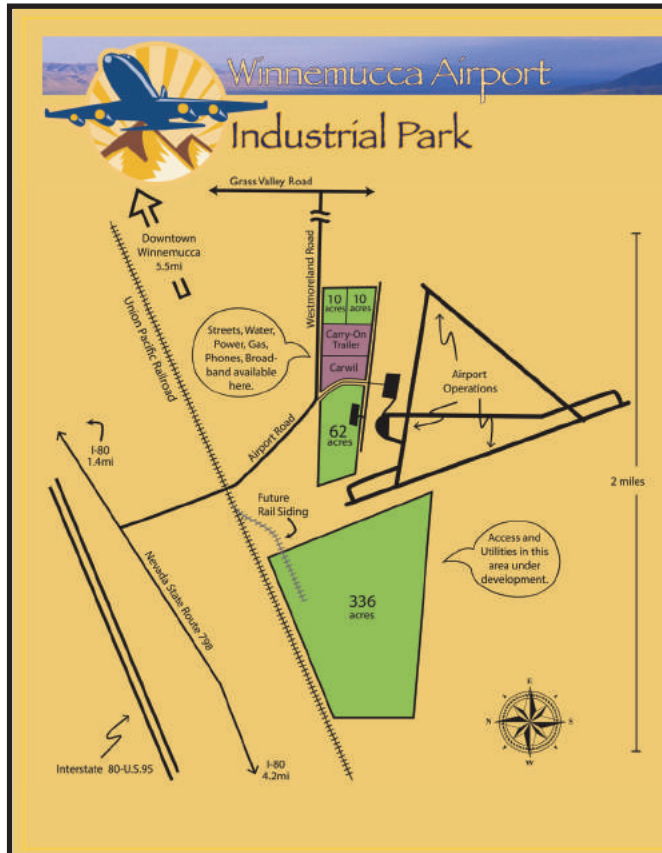
Northeastern Nevada Regional Development Authority
1500 College Parkway • McMullen Hall, #103 • Elko, NV 89801
775.738.2100 • 1.866.937.3556 • 775.738.7978 (FAX)

HUMBOLDT COUNTY

City of Winnemucca



www.hcnv.us



- Paved streets
- Power connections
- Gas connections
- Phone connections
- Broadband



QUICK FACTS

- Population: 17,203
- Elevation: 4,300
- Square miles: 9,626
- Oldest County in Nevada.
- Created by the Utah Territorial Legislature in 1856.
- Oasis in the High Desert



WINNEMUCCA

Humboldt County

Overview

Winnemucca, Nevada is the cross-road linking the northern route on US Highway 95 from Oregon and Idaho to Interstate 80 which spans from East to West across northern Nevada, bridging the gap between central California and Utah. Many people are surprised to find us in this high desert landscape and our City is often referred to as an "oasis in the desert" by those passing through.

Winnemucca is a great place to live and a great place to work. We're a community of about 17,000 located in north central Nevada, in the heart of the Great Basin.

Winnemucca is surrounded by vast unpopulated stretches of land. This provides an opportunity for nearly unlimited access for exploring, sightseeing, hunting, fishing and many other recreational opportunities.

The region has a mild high desert climate, 225 days of sunshine per year, warm days in the summer moderated by the cool summer nights. Winters are easy, with an average of only 53 days per year that the temperature drops below freezing.

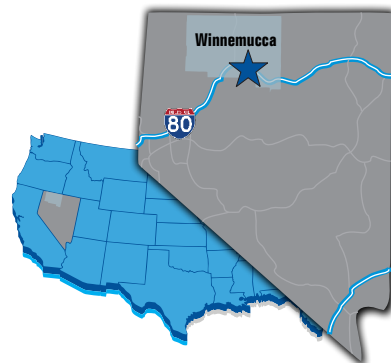
- Highways: Interstate 80, Hwy 95
- Non-commercial airport (100LL and JetA fuel). Five miles southwest of Winnemucca. Four runways, two helipads, hangars and tiedowns.
- Rail line with spurs, Union Pacific and BNSF

Served by the following utilities:

- NV Energy
- Harney Electric Cooperative, Inc.
- Southwest Gas
- City of Winnemucca Municipal Utilities

Existing industries

- Mining
- Manufacturing
- Ranching/Farming
- Agriculture
- Visitor Services



Learn more: www.nnrda.com

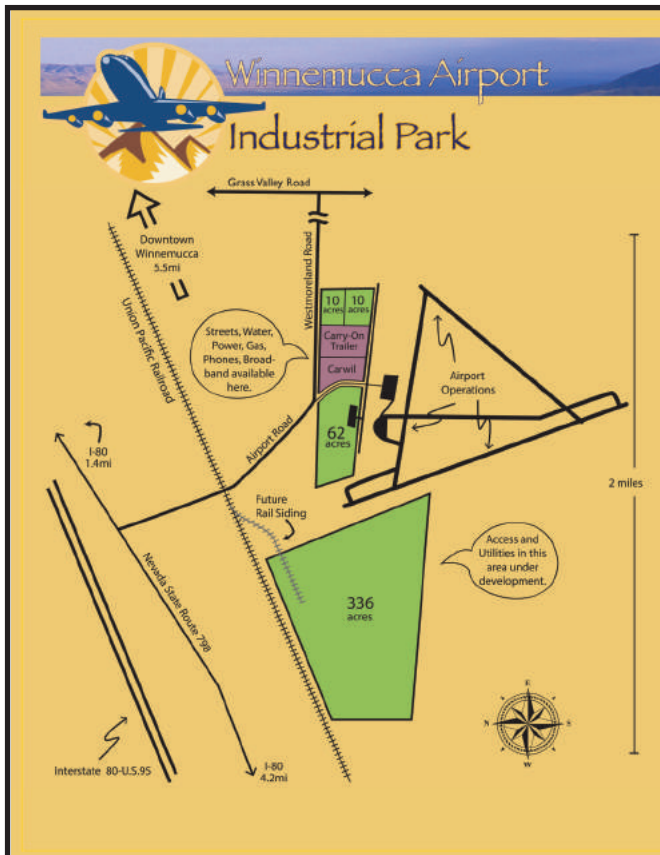
Northeastern Nevada Regional Development Authority
1500 College Parkway • McMullen Hall, #103 • Elko, NV 89801
775.738.2100 • 1.866.937.3556 • 775.738.7978 (FAX)

Winnemucca

Humboldt County



winnemuccacity.org



- Paved streets
- Power connections
- Gas connections
- Phone connections
- Broadband



QUICK FACTS

- Population: 8,000
- Elevation: 4,300
- Square miles: 9.6
- Incorporated October 4, 1917
- The Oasis in the High Desert
- 100 years: 1917-2017
- City named after Paiute Indian Chief and daughter Sarah Winnemucca



LANDER COUNTY

Towns: Battle Mountain, Austin, Kingston

Overview

Lander County is ideally situated in the center of Nevada's mining country. Nineteen major mines, with 9,600 employees are within an 80-mile radius. Inviting for those who want to tap into the mining supply chain, logistics or become a manufacturing partner. Plus, small business thrives in our stable community.

Clean air, low crime rate, easy access to endless outdoor activities and the charm and caring of a rural community.

Highways: Interstate 80, Highway 50, NV305 and NV306

Airport is located in Battle Mountain and has two runways, fuel (100LL and Jet A), pilot's lounge, hangars, rental cars.

The Austin airport has two runways, pilot's lounge, hangars, and fuel.

Rail line with spurs, Union Pacific and BNSF

Served by the following utilities:

- Battle Mountain Municipal Utilities
- NV Energy
- Southwest Gas
- Suburban Propane

Existing industries

- Mining
- Ranching
- Manufacturing
- Renewable Energy



Learn more: www.nnrda.com

Northeastern Nevada Regional Development Authority
1500 College Parkway • McMullen Hall, #103 • Elko, NV 89801
775.738.2100 • 1.866.937.3556 • 775.738.7978 (FAX)

LANDER COUNTY

Towns: Battle Mountain, Austin, Kingston

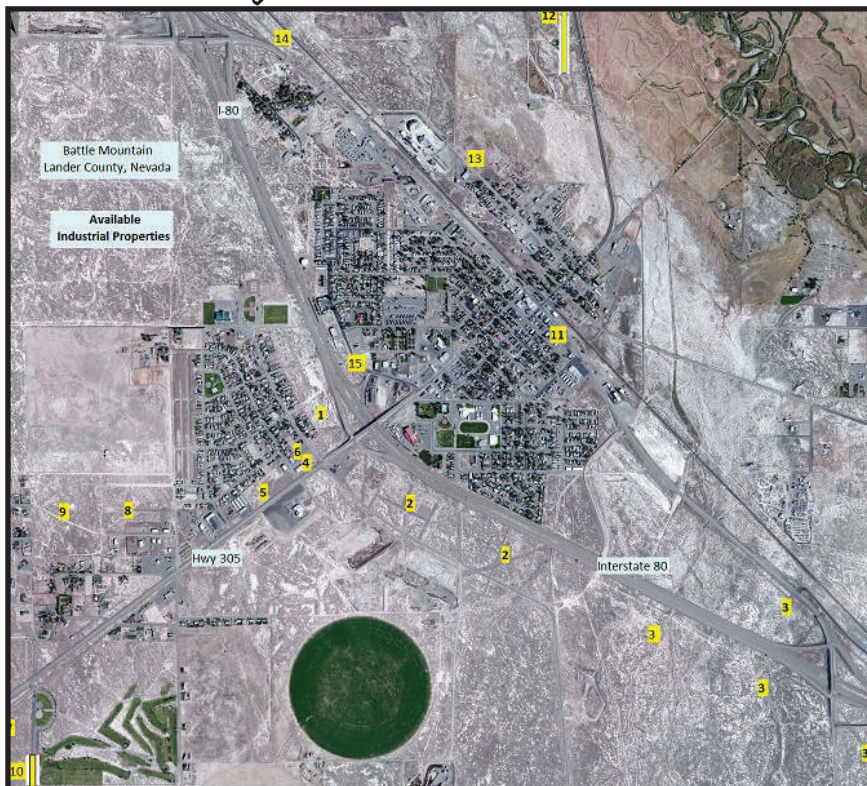


www.landercountynv.org



Gilman Springs

Lander County Industrial Land



PROPERTY NUMBERS

Acree and Buildings

- 1 14.30 acres, I-80 frontage
- 2 2–10 acres, I-80 frontage
- 3 400+ acres,
I-80 Interchange 233
- 4 8,400 sq ft divided bldg/Hwy 305
- 5 3 acres, Hwy 305 frontage
- 6 5,000 sq ft bldg
- 7 127 acres, Hwy 305 frontage
- 8 2,500–6,000 sq ft bldgs
up to 14 acres
- 9 9–47 acres
- 10 Raw desert land,
sections available
- 11 1,800 sq ft bldg,
Hwy 305 frontage
- 12 300 acres, 6,000 square feet of
Buildings
- 13 Three one-acre parcels
- 14 10 plus acres
- 15 .41–2.0 acres, I-80 Entrance

QUICK FACTS

- Population: 5,775
- Elevation: 4,500
- Square miles: 5,621
- Established December 19, 1862
- 85% Public Land
- Home of the World Human Powered Speed Challenge
- Base camp to Nevada's Outback
- Battle Mountain was a stop on first transcontinental air race.



WHITE PINE COUNTY

City of Ely

Overview

From the splendor and majesty of the Great Basin National Park to the historic settings of the old west, White Pine County combines Nevada's progressive business climate with a serene, uncomplicated quality of life. White Pine County is the fifth largest county in Nevada and covers approximately 8,905 square miles and accounts for nearly 8.1 per cent of Nevada's total land surface area of 110,540 square miles.

White Pine County is well positioned to support new industry and growth. Ely is the regional center for commerce and business for much of eastern Nevada. Located on the NAFTA highway (U.S. Highway 93), Ely is poised for future industry expansion and tourism.

A County owned industrial park is located three miles north of Ely across the highway from the municipal airport.

Our local government officials are committed to economic diversification and have pledged themselves to assisting new industries to locate and expand in White Pine County.

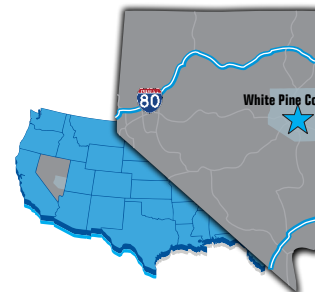
- Highways: Hwy 50 and Hwy 93
- Airport: 2 runways, 4 hangars, 30 tie downs, fuel (100LL and Jet-A)

Served by the following utilities:

- Mt. Wheeler Power
- Pilot-Thomas Petroleum
- Suburban Propane
- City of Ely Municipal Utilities

Existing industries

- Mining
- Ranching
- Manufacturing
- Tourism



Learn more: www.nnrda.com

Northeastern Nevada Regional Development Authority
1500 College Parkway • McMullen Hall, #103 • Elko, NV 89801
775.738.2100 • 1.866.937.3556 • 775.738.7978 (FAX)

WHITE PINE COUNTY

City of Ely

WHITE PINE COUNTY



www.whitepinecounty.net



White Pine County Industrial Park



QUICK FACTS

- Population: 10,030
- Elevation: 6,439
- Square miles: 8,905
- Established in 1869
- Home to the oldest living tree, Bristlecone Pine
- 94% public land



ELY

White Pine County

Overview

Ely, Nevada sits at the junction of U.S. Highways 50 & 6 (east to west) and U.S. 93 (north to south).

Ely has two primary industries, mining and the Ely State Prison. The City of Ely is poised for new beginnings. The Ely City Council is committed to economic diversification and have pledged themselves to assisting new industries to locate and expand in the City of Ely.

Residents enjoy all four seasons from winter's snow covered mountains to spring wild flowers, brilliant sunsets and clear starry skies on summer nights, and hillsides of golden quaking aspens in the fall.

Area residents enjoy un-crowded, unlimited outdoor recreational opportunities at their door steps. Within an hours' drive from town in any direction, there is hiking, fishing, hunting, mountain biking, and cross country skiing. Rock-hounds can spend an afternoon collecting garnets six miles west of Ely at the Garnet Hill Geological Site. Residents and visitors watch, photograph, or hunt the state's largest elk herd, second largest mule deer herd, and third largest antelope herd.

- Highways: Hwy 50 and Hwy 93
- Airport: 2 runways, 4 hangars, 30 tie downs, fuel (100LL and Jet-A)

Served by the following utilities:

- Mt. Wheeler Power
- Pilot-Thomas Petroleum
- Suburban Propane
- City of Ely Municipal Utilities

Existing industries

- Mining
- Ranching
- Manufacturing
- Tourism

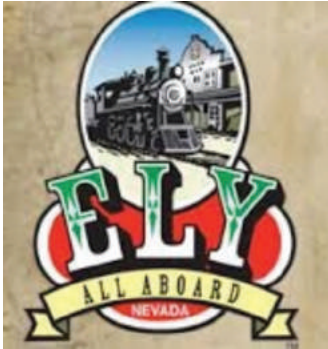


Learn more: www.nnrda.com

Northeastern Nevada Regional Development Authority
1500 College Parkway • McMullen Hall, #103 • Elko, NV 89801
775.738.2100 • 1.866.937.3556 • 775.738.7978 (FAX)

ELY

White Pine County



www.elycity.com



White Pine County Industrial Park



QUICK FACTS

- Population: 4,200
- Elevation: 6,439
- Square miles: 7.1
- Founded in 1906

- Pat Nixon, former first lady, born in Ely in 1912
- Named after Smith Ely of Selby Copper Mining.





BAWCOM

REAL ESTATE

32 Spring Creek Pkwy
Spring Creek, NV 89815

SERVING SPRING CREEK,
ELKO AND ALL
SURROUNDING AREAS

775.753.6379

BAWCOMAGENTS@FRONTIERNET.NET

VIEW OUR LISTINGS AT
www.BawcomCRHomes.com

COME EXPERIENCE THE FUN IN



2017 CALENDAR OF EVENTS

Fun for the whole family!

JUNE 19 - 24	MISSOULA CHILDREN'S THEATER "TREASURE ISLAND" AUDITIONS JUNE 19 PERFORMANCES JUNE 24 AT 3 P.M. AND 7 PM
JULY 4	4TH OF JULY PARADE
JULY 10-13	RODEO BIBLE CAMP
JULY 15	ANGEL LAKE FISHING DERBY
JULY 28 - 30	WELLS FUN RUN
AUGUST 4 OR 5	RUBY MOUNTAIN RELAY
AUGUST 5	WELLS ANNUAL RIB COOK- OFF
AUGUST 5 - 7	WELLS JR. RODEO RUCKUS
SEPTEMBER 9	RACE TO THE ANGEL
NOVEMBER 18	CHRISTMAS BAZAAR

We have swimming & golf too!

Check in often for updates:
<http://www.wellsnevada.com/>
<http://cityofwellsnv.com/>



27

Years of Serving Elko County's Commercial and Industrial Real Estate Needs

COLDWELL BANKER ALGERIO/Q-TEAM REALTY



SERVICES

- Retail: Sales & Leasing
- Industrial: Sales & Leasing
- Office: Sales & Leasing
- Land: Sales & Development
- Consulting
- Property Management

700 Idaho Street, Elko
&
114 Tonka Lane,
Spring Creek



ALGERIO/Q-TEAM
REALTY

Elko Office (775) 738-4078
Spring Creek Office (775) 738-9866

www.CBElko.com

Two Great Centers...One Great Location



ELKO CONVENTION CENTER & ELKO CONFERENCE CENTER
700 MOREN WAY • ELKO, NEVADA

APPROXIMATELY 30,000 S.F. OF USABLE MEETING SPACE AVAILABLE FOR:

Conventions • Business Meetings • Private Parties • Weddings/Receptions



Elko Convention & Visitors Authority
(775) 738-4091 or visit www.ExploreElko.com

EDUCATION



Great Basin College has placed meeting and sustaining industry needs at the forefront of its strategies as it continues to fulfill its mission to serve rural Nevada.

GBC's main residential campus is located in Elko, however, the college also covers 86,500 square-miles of rural Nevada, offering interactive video classes and services in the communities of Battle Mountain, Ely, Pahrump and Winnemucca. Over 15 satellite centers are also located in rural communities scattered throughout the state.

GBC offers 48-week accelerated associate degree programs in five career technical areas including Diesel Technology, Electrical Systems



Technology, Instrumentation Technology, Industrial Millwright Technology and Welding Technology.

With industry support, many career technical students have the opportunity to obtain scholarships and paid internships with local mining companies and

contractors.

97 percent of the students in career and technical fields are employed and 82 percent are employed in their chosen field of study.

Graduates in Health Sciences and Education continue to supply the high demand of professionals of local health care providers and school districts.

100 percent of graduates in the health professions (nursing, radiology technology, medical coding and billing, and human services) are employed and 95 percent are working in their chosen field of study.

GBC's innovation in long-distance education has now advanced into offering a variety of certificate and degree programs completely online.

Online bachelor programs have become a viable option for professionals who already maintain full-time positions in the community who wish to continue their education or advance in their respected fields.

Bachelor's degrees in Biological Sciences, Land Surveying, Natural



Resources, Management in Technology, and English help to fill professional positions throughout rural Nevada.

"Growing our own" has become a strategy to provide a trained workforce for rural Nevada in jobs for which it is otherwise difficult to recruit and retain quality professionals.



Learn more: www.nnrda.com

Northeastern Nevada Regional Development Authority
1500 College Parkway • McMullen Hall, #103 • Elko, NV 89801
775.738.2100 • 1.866.937.3556 • 775.738.7978 (FAX)

EDUCATION continued

Rural Education

In rural Nevada, we believe there is nothing more important than the safety and education of the children in our communities. Our teachers, administrators and staff members are all highly qualified and dedicated to each and every child enrolled in our schools. Rural school districts, by in large, are the hub for community activity and create an environment that encourage student participation, ownership, and civic pride.

Although a majority of rural Nevada students are enrolled in traditional K-12 public schools, other options are available for parents and students to ensure academic success. Nevada's Charter Schools are public schools funded by the state and governed by the Nevada State Public Charter School Authority (SPCSA) to ensure high standards and serve the students in the best possible manner. In addition, rural Nevada enjoys the support of religious-based private schools that are licensed by the Nevada Department of Education and promote both academic and spiritual growth along the student's scholastic journey.

Rural Advantages

Smaller community-based school districts enjoy a great deal of liberty resulting in less bureaucracy and the ability to determine best practices for their student population. Some

school districts in rural Nevada have catered to local mining schedules to enhance family cohesion by adopting a four day school week. Teachers and staff members in these districts participate in PLC (Professional Learning Communities) one Friday a month to ensure the best educational experience for their students.

Most school districts are relatively small with an average enrollment of roughly 1,000 K-12 students. Rural teacher-to-student ratios average approximately 21 to 1 allowing for more individualized instruction, personalized learning, and positive social interactions.

Family Friendly Schools

Most rural Nevada school districts offer multiple after school programs to 1st–8th grade students while various sports programs encompass a large portion of 6th–12th grade extracurricular activities. Most school districts welcome and encourage parental participation and have an open door policy which allows parents and guardians to visit in their child's classroom throughout the school year.

Rural Nevada school districts have developed Parent Involvement & Resource Centers (PIRC) that offer K-12 support and volunteer opportunities for parents,

grandparents and guardians where families have access to technology centers, lounge areas, district-wide event calendars, play areas for younger children and educational resources that can be borrowed for use at home. In addition, rural districts have adopted and maintained a thriving K-8 WATCH D.O.G.S.© (Dads Of Great Students) program that encourages positive male role models who volunteer in their child's school at least one day each school year. Lander County School District was the first northern Nevada school to adopt the national program over five years ago and have supervised the implementation of the program to multiple districts throughout rural Nevada.



Learn more: www.nnrda.com

Northeastern Nevada Regional Development Authority
1500 College Parkway • McMullen Hall, #103 • Elko, NV 89801
775.738.2100 • 1.866.937.3556 • 775.738.7978 (FAX)





Welcome to

ELKO COUNTY

A great place to call home.

www.elkocountynv.net



Ask how members received 5% back on loan interest last year

THE LOCAL'S CHOICE FOR BANKING SOLUTIONS!

- Checking & Saving Accounts
- Personal Loans
- Auto/RV Loans
- Visa Credit Cards
- Moola Moola Kids Club
- Time Share Certificates
- IRA's
- Home Mortgage
- Home Equity Loans
- Free Notary
- Mobile Banking

Elko

2397 Mtn City Hwy, Elko Junction Shopping Ctr, Elko, NV 89801-1496
775-738-4083 • FAX 775-738-2582

Spring Creek

580 Spring Valley Ct, Spring Creek NV 89815-6811 • 775-753-6272
FAX 775-753-6380

www.elkofcu.org • efcu@elkofcu.org



Elko Federal Credit Union





**Full Line of Industrial Oils & Lubricants
Synthetic Oils and Lubricants
Tools, Bolts, & Industrial Supplies**

ELKO TOOL & FASTENER, INC. 775-738-2288 • 3716B Idaho St. • Elko, NV

**Check out our website
ElkoToolandFastener.com**

**WE'RE HERE ALL YEAR -
AT TAX TIME, OR ANY TIME.**

**WE UNDERSTAND YOU DON'T THINK
ABOUT TAXES ALL YEAR - BUT WE DO.**

At H&R Block, we're available year-round to discuss the tax implications of your life-changing events. From wedding bells, babies and new homes to medical issues and natural disasters, we're here to put our expertise to work for you.

AVAILABLE AT PARTICIPATING OFFICES.

331 11TH ST, STE 112, ELKO, NV 89801
775-738-4026
171 SILVER ST, SPACE 100, ELKO, NV 89801
775-777-3330

**H&R
BLOCK**

RECREATION

Whether your hobby is snowmobiling through deep untapped amounts of powder or fly fishing for trout in pristine mountain reservoirs and streams, northeastern Nevada can provide a fix for any outdoor recreationalist.

Located in the high Nevada desert, northeastern Nevada has outdoor

playgrounds all around. The majestic snowcapped peaks of the Ruby Mountains offer several scenic and adventure-ridden opportunities. The Ruby Lake National Wildlife Refuge is a wetland oasis that lies along the eastern flank of the mountain chain. It is a great place to escape and take your chance at waterfowl hunting and fishing.

The Lamoille Canyon is a natural scenic byway that provides access to the Lamoille Canyon Scenic Area and the Ruby Mountain Wilderness. The area has countless day hikes and backpacking expeditions, including the Ruby Crest National Recreation Trail. The route has more than 200 miles of designated trails ranging from beginner to advanced difficulty. Winding trails typically reveal glacial lakes, a series of rugged peaks and valleys, or take you to high-

elevation destinations such as Wines Peak, which tops 10,000 feet.

Head north and you will find the Wildhorse State Recreation Area, a high-altitude mountain reservoir offering a pristine water playground. Recreationalists can spend the day boating on the reservoir and then camp and picnic along the shore at night.

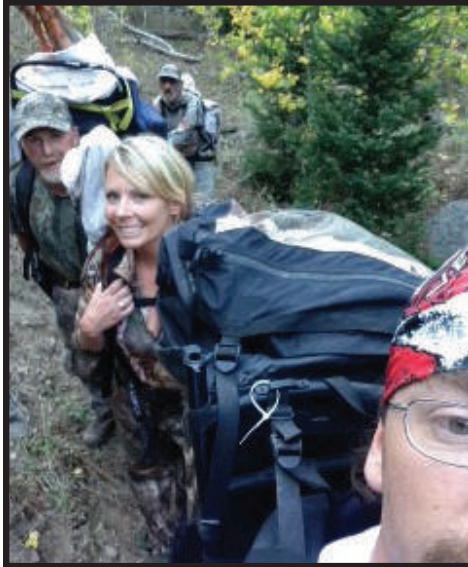
If you're looking to have a day on the water, a

popular spot is the South Fork State Recreation Area. This is a favorite place for boaters looking to either cruise on the reservoir or haul a water skier or wakeboarder. The reservoir offers adrenaline-filled sports or a relaxing area to fish or view wildlife. Anglers typically find trout or bass in the 1,650-acre reservoir.

Benefiting from having four unique seasons, northeastern Nevada sports a good mixture of summer and winter activities, allowing for year-round adventures.

During the winter, skiers and snowboarders can either head to the SnoBowl ski resort, or head south to the Ruby Mountains where they can either catch a helicopter ride with a heli-skiing operation or snowshoe up the mountains and ski down.

Skiers and snowboarders will find the ultimate backcountry experience in the Ruby Mountain range, which has 10 peaks over 11,000 feet in elevation. In the summer, the area becomes a mecca for hikers and rock climbers of all experience levels. Easily accessible from the scenic byway, climbers can find many technical granite routes, already mapped out by previous generations of climbers. In the winter, ice climbers can scale the frozen waterfall routes.



Learn more: www.nnrda.com

Northeastern Nevada Regional Development Authority
1500 College Parkway • McMullen Hall, #103 • Elko, NV 89801
775.738.2100 • 1.866.937.3556 • 775.738.7978 (FAX)

RECREATION continued

For people less interested in adrenaline-laced sports or just hoping for a less strenuous day out in the wilderness, northeastern Nevada also has a thriving horseback riding community. There are a number of popular trails for riders, including the Ruby Crest National Recreation Trail and the South Fork State Recreation Area. Other sites include the rugged Mary's River Basin Trail and the Soldier Basin that leads riders to breathtaking alpine lakes where they can enjoy some memory-making mountain fishing.

Many trails can either be ridden through in a single day-trip or lengthened out into four-day treks. Riders can also go the motorized route with snowmobiles in the winter and ATV riding in the summer. Spruce Mountain, is another popular spot for riders, offering grand views from mountain ridges.

Northeastern Nevada is a destination for hunters with Elk, Deer, Antelope and Bighorn sheep. We also have a wide variety of birds and water fowl with various seasons for hunting.

For people not interested in leaving the comfortable confines of towns there are many parks and golf courses to relax and play in during the warm summer days. All the sports you would find in any town can be found in the communities of northeastern Nevada; Softball, baseball, soccer, football, volleyball, etc.



Learn more: www.nnrda.com

Northeastern Nevada Regional Development Authority
1500 College Parkway • McMullen Hall, #103 • Elko, NV 89801
775.738.2100 • 1.866.937.3556 • 775.738.7978 (FAX)



In Elko, quality healthcare is closer than you think.

At Northeastern Nevada Regional Hospital, we are committed to providing the highest quality care possible, along with the expertise and leading edge technology you'd expect to find at a larger hospital. And we do it all with small town charm, compassion and respect for our neighbors.

Our quality services include:

- Inpatient & Outpatient Surgery
- 24-Hour Physician-Staffed Emergency Room
- 24-Hour Full-Service Radiology
- Interventional Cardiology
- Obstetrics & Gynecology
- Sleep Medicine
- Complete Rehabilitation Program Including Physical, Occupational, Respiratory & Speech Therapy
- Health & Wellness Support Groups
- State-of-the-Art Laboratory
- Bilingual Services
- Most Insurances Accepted Including VA, Medicare and Medicaid



NORTHEASTERN NEVADA
REGIONAL HOSPITAL

775.738.5151 nnrhospital.com



Big city cancer care... *without the big city.*

Cancer patients in northeastern Nevada can now spend less time traveling to and from treatments, and more time in the comfort of family and friends. Northeastern Nevada Radiation Oncology Center in Elko offers state-of-the-art radiation therapy, using equipment that is equivalent to, or better than, the treatments available in larger cities. **If you or a loved one are facing a cancer diagnosis, we are here to help.**

Call **775.748.HOPE (4673)** or visit
NortheasternRadiation.com.



2003 Errecart Blvd. | Elko, NV 89801
www.NortheasternRadiation.com

 Find us on Facebook — **Local, Independent Cancer Care** for Northeastern Nevada —



Through exhibits and programs, visitors experience the human history and natural history of the area. In addition, the museum houses a first class collection of western art and regularly rotating art shows. For research purposes, the archives holds 40,000 photographs, local newspapers from 1869 to the present, public records, manuscripts, and a 5,000 volume library.

The museum also serves as a community gathering space for private and public events. It features a 90-seat theater with three stages and a projection screen. Contact our events coordinator to reserve the venue or theatre room for your next event.

The museum store offers books, souvenirs, and craft items with an emphasis on made in Nevada products.

- *Natural and regional history artifacts on exhibit in more than 40 custom cases.*
- *Nevada's largest collection of wild animals from around the world is on permanent exhibit in the Wanamaker Wing.*
- *2nd largest Will James collection in the world.*
- *Rotating art galleries.*
- *Monthly featured local artist in the Museum Store.*

775-738-3418 • 1515 Idaho St, Elko NV • www.museumelko.org
Museum Hours: Tuesday-Saturday 9am-5pm • Sundays 1pm-5pm



You're Welcome!

Make Elko's Place Your Place!

- 222 Deluxe Rooms • Aspens Bar & Grill
- 24-Hr. Coffee Shop • Daily Theme Buffets
- Live Entertainment • Exciting NEW Slots
- Starbucks • Table Games • Sports Bar
- William Hill Sports Book • Fitness Center
- Business Center • Elko's Only LIVE Poker
- Seasonal Swimming Pool • Gift Shop



2065 IDAHO STREET • ELKO • 775.738.2111 • 800.545.0044 playelko.com

CULTURE/EVENTS

Northeastern Nevada's rich history, coupled with modern flavor, provide opportunities all year round for those willing to take the plunge.

There are festivals throughout the year, beginning in late January with the National Cowboy Poetry Gathering. Colorful characters recite poems and play music alongside their counterparts from

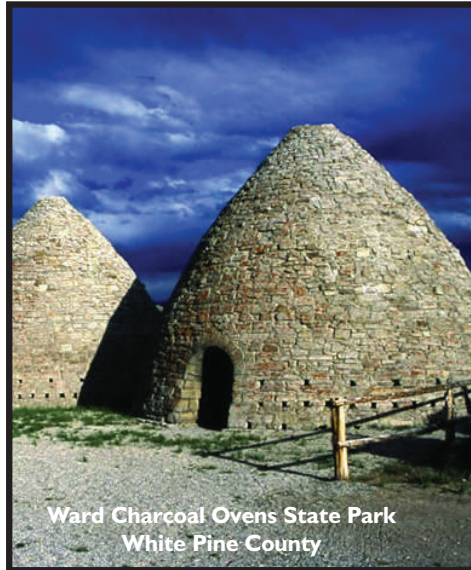
countries across the globe.

Since the 1800s, mining, ranching, legal gambling and the innovation of the railroad have helped mold northeastern Nevada into what it is today. Reminders of these industries are found daily in the communities throughout northeastern Nevada.

The western experience can be explored further at the California Trail Historic Interpretive Center, located a few miles west of Elko on Interstate 80 at the Hunter exit. Constructed right along the old route of the California Trail, the center features interactive displays and life-size dioramas exemplifying the full experience of life on the trail. Those wanting to start a new life farming, ranching or mining in California made their way through northeastern Nevada along the trail's

main route and via the Hastings Cutoff. The cutoff was made famous by the doomed Donner Party who were late

crossing the Sierra-Nevada Mountains near Reno after choosing the cutoff over the main route. The center also pays homage to the settlers' interactions with indigenous people, the Western Shoshone and Paiute American Indians. Members of both tribes still reside throughout the region.



Ward Charcoal Ovens State Park
White Pine County

Coupled with

Fourth of July festivities is the annual National Basque Festival. This popular festival features traditional dancing, a parade, live music, food and sporting events. Basque "games" include weight lifting and wood chopping. Basque tradition and culture have played a major role in northeastern Nevada, where large-scale sheepherding served as a major draw for Basque immigrants looking for a new life in the American West. Although sheep ranching has dwindled, many of the families have stayed and become pillars of their communities.

The Northeastern Nevada Museum collectively pays homage to these and other elements of the regions past. In addition, the museum boasts the fossilized remnants of a mastodon found in Spring Creek in 1994. The Wanamaker Wildlife Wing, added in

1999, features life-size taxidermy of animals hunted around the world. In fact, it is Nevada's largest collection of such animals, with approximately 300 donated to the exhibit by Jack and Francis Wanamaker. The museum also features artwork from regional artists, as well as traveling exhibits.

The Western Folklife Center focuses on the preservation and perpetuation of the ranching lifestyle, as well as other parts of the western experience. The center has a year-round gift shop, exhibits on cowboy culture, and an old-fashioned bar that sets the mood of the Old West. The center is host to the annual National Cowboy Poetry Gathering, which brings traditional story tellers, musicians, poets and other artists together for a week of activities.

EVENTS

Northeastern Nevada communities love events and all have events year round. All of our communities host car shows, rodeos, fairs and a variety of sporting events such as fun runs and walks. Below is a sampling of events found in each of the communities NNRDA serves;



Learn more: www.nnrda.com

Northeastern Nevada Regional Development Authority
1500 College Parkway • McMullen Hall, #103 • Elko, NV 89801
775.738.2100 • 1.866.937.3556 • 775.738.7978 (FAX)

CULTURE/EVENTS continued

Elko County

City of Elko

National Cowboy Poetry
Gathering
National Basque Festival
Film Festival
Silver State Stampede and
several other rodeos
Ruby Mountain Balloon Races

City of Carlin

Ranch Hand Rodeo and several
other rodeos
Buckaroo Bash
Smokin Hot Chili Cook-off
Chinese Garden Spook Walk
Sho n Shine Car Show

City of Wells

Angel Lake Kids Fishing Derby
Ruby Mountain Relay
Rib Cook-Off
Wells Fun Run

City of West Wendover

Danger Cave Tour
Rainbow Cruise-In Car Show
Toana Vista Pro Am Golf
Tournament
Wendover Air Show
Bonneville Salt Flats
HellFire 22 Rocket Launch,
Speed Week, Motorcycle Speed
Trails, and World Finals

Eureka County

Fiddlers Contest
Historic Opera House
Court House and Museum
Eureka Car Show
Nevada Bowhunters Jamboree

Humboldt County

City of Winnemucca

Ranch Hand Rodeo
Shooting the West
Run-A-Mucca Motorcycle Rally
Wheels Car Show

Lander County

World Human Powered
Speed Challenge
Chukar Tournament
Burner's Car show

White Pine County

City of Ely

Nevada Northern Railway
and Museum, year round
activities and events
Fire and Ice Festival
Silver State Classic Open Road Race
Great Basin Astronomy Festival



Learn more: www.nnrda.com

Northeastern Nevada Regional Development Authority
1500 College Parkway • McMullen Hall, #103 • Elko, NV 89801
775.738.2100 • 1.866.937.3556 • 775.738.7978 (FAX)



DESERT MOUNTAIN REALTY

1060 E. Aultman Street, Ely, NV 89301
(775) 289-3038

desertmountainrealty.com



Sonja Almberg

Sales Associate

Sonia@desertmountainrealty.com



Kenna Almberg

Broker/Owner

Kenna@desertmountainrealty.com

RESIDENTIAL • MOUNTAIN PROPERTIES • RANCHES • COMMERCIAL • LAND

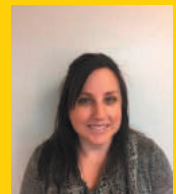
Desert Mountain Realty has been providing quality real estate service to White Pine County and all of Eastern Nevada for over 35 years. As a family-owned business with all of our agents from White Pine County, we love what our rural area has to offer, and take pride in providing our clients and community with professional friendly service catered to your personal needs. We specialize in everything from farms & ranches to commercial and residential. Desert Mountain Realty was incorporated in the State of Nevada in 1980 and is a member of the National Association of Realtors and the Las Vegas Multiple Listing Service. If you are looking to buy or sell property the Desert Mountain Realty Team is ready to assist you with all of your real estate needs.



Vivian Almberg

Broker/Sales Associate

Vivian@desertmountainrealty.com



Shannan Cessford

Assistant

info@desertmountainrealty.com

No One Knows White Pine County Like We Do!

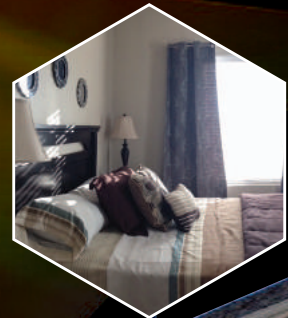


MODERN CONVENIENT SPACIOUS

Located in Elko, Rabbitbrush Run offers high-quality apartment living close to shopping, gyms, and freeway access. The nicely landscaped grounds are walker friendly and include a playground area that is centrally located.

2&3 Bedroom Move-in Ready Apartments

- Walk-in closet
- Separate laundry room
- Central air
- Pet friendly units
- Granite counter tops
- Private balcony & storage room
- Washer/Dryer hookups



RABBITBRUSH RUN APARTMENTS

Call to view **775-777-7700**

Apply online www.rabbitbrushrun.com
3700 Sundance Drive, Elko, Nevada 89801
info@rabbitbrushrun.com

Furnished 2 Bedroom units now available

- Completely
Furnished including
housewares & linens.
- All utilities included
PLUS Internet & Cable



COMING SOON
4,000sf Community Center

SUCCESS STORIES



Coach USA

Coach USA is one of the largest transportation companies in North America operating more than 2,400 motorcoaches and employing more than 5,000 people. Coach USA owns more than 25 bus carriers in North America. One of these carriers is located in Elko, Nevada. This business segment operates across Northeastern Nevada and is the leading provider of mining employee transportation services. Coach USA Elko operates more than 118 motor-coaches a day on behalf of Barrick, Newmont, Kinross, Silver Standard, Hycroft, and Jerritt Canyon

Joy Global

Joy Global attracts, develops and retains highly-skilled manufacturing technicians, innovative engineers, and smart business people to foster a diverse workforce that enables us to deliver world-class products and service. For 130 years, Joy Global has been the preeminent manufacturer of world-class surface and underground mining equipment, recognized for its quality and reliability. Today, our commitment to innovation and quality continues to solve mining's toughest challenges. Joy Global is the leading service provider for the mining industry, with a 24/7 direct service and support network to help our customers.



Learn more: www.nnrda.com

Northeastern Nevada Regional Development Authority
1500 College Parkway • McMullen Hall, #103 • Elko, NV 89801
775.738.2100 • 1.866.937.3556 • 775.738.7978 (FAX)

SUCCESS STORIES continued



Pacific Steel and Recycling

Pacific Steel and Recycling is a 125 year old , 100 % employee owned company with forty four retail locations, two automobile shredders and one international trans load facility. Our footprint covers nine Western states and Canada. Pacific recycles all types of scrap metals, steel, stainless, copper, brass, aluminum, and automobiles as well as several types of alloys. While Pacific certainly provides a needed service to the region, our success would not be possible without our partner customers. We have found Northeastern Nevada to be welcoming at all levels, from large mine sites, to the smallest recycling customers, and all our new steel customers large and small. We are grateful for the opportunity to do business with so many great companies within the region. There are few places in the country with the multiple sector growth and the ROI offered by this region.

Legarza Exploration

Legarza Exploration started in the business of mining support services in January of 1992. Newmont Mining Company was one of our customers that first year. Here we are 25 years later and still working with Newmont supporting their gold producing efforts. From the start and along the way we have worked for numerous exploration companies as well. Our work started out primarily in the Elko-Carlin and Battle Mountain areas, but has covered the greater portions of rural Nevada. The work for the exploration companies has taken us to many and varied sites with many different outcomes. It has been exciting to be along for possible discoveries that move the gold producing opportunities along.



Learn more: www.nnrda.com

Northeastern Nevada Regional Development Authority
1500 College Parkway • McMullen Hall, #103 • Elko, NV 89801
775.738.2100 • 1.866.937.3556 • 775.738.7978 (FAX)



SUCCESS STORIES continued



Ram Enterprise, Inc.

RAM Enterprise, Inc. provides specialized professional labor services to industry; primarily in the mining, power generation, chemical processing and food processing sectors. We compliment the services we provide with a handful of products used in these industries. We have been in business since 1991 and our service area includes the Western United States and a number of foreign countries.

Our company is structured by service specialty, and includes the following groups: Process Maintenance Service, Conveyor Belt Service, Industrial Construction and Electrical Service. Our Elko Nevada facility also houses the manufacturing of our Imtech Rubber Products line, which is sold throughout the world and is an AISC Certified shop, which means that our Industrial Fabrication Department meets the highest standards while fabricating a variety of steel components.

RAM also has service centers in Las Vegas Nevada, Salt Lake City Utah, Tucson Arizona.

Savage

Savage began operating in Elko in 2010. The company manages 60 acres of land at the Northern Nevada Regional Rail Port and provides services that include truck transportation, transloading products between trucks and railcars, industrial rail switching, inventory management and railcar heating. Savage supports a wide range of customers in the mining and oil and gas industries and other commodities markets. Throughput at the Rail Port has increased from 200 tons per month when Savage started operations in Elko seven years ago to 6,700 tons per month and still growing. Elko is one of 230-plus Savage operating locations throughout North America with more than 3,500 Team Members in total. Savage is focused on safely providing customized solutions to meet each Customer's unique supply chain challenge. For more information, visit www.savageservices.com.



Learn more: www.nnrda.com

Northeastern Nevada Regional Development Authority
1500 College Parkway • McMullen Hall, #103 • Elko, NV 89801
775.738.2100 • 1.866.937.3556 • 775.738.7978 (FAX)

SUCCESS STORIES continued



SAS Global Corporation

SAS Global Corporation is a global manufacturing company specializing in highly engineered wear solutions. For over 60 years, SAS Global has been one of the nation's leading suppliers of abrasion resistant steels from our Vanguard plate to our own chromium carbide overlay plate which is manufactured in our 185,000 sq ft facility located in Michigan. Our new 26,000 sqft facility located at the Elko railport has been fully equipped with technologically advanced fabrication equipment that is operated by experienced personnel. We currently have 40 employees in which only three were transferred from our Michigan facility. The well trained local work force allowed us to generate 37 jobs in our first two years of operations. Our 3 to 5 year goal is to double both the facility size as well as our work force.



Learn more: www.nnrda.com

Northeastern Nevada Regional Development Authority
1500 College Parkway • McMullen Hall, #103 • Elko, NV 89801
775.738.2100 • 1.866.937.3556 • 775.738.7978 (FAX)



